



高雄醫學大學
KMU Kaohsiung
Medical University

X



國家防災日
National Disaster Preparedness Day

Precautions for evacuation drills on National Disaster Prevention Day

Date: September 21, 2022 (Wednesday)





高雄醫學大學
國際事務處
Kaohsiung Medical University
Office of Global Affairs

X



Purpose:

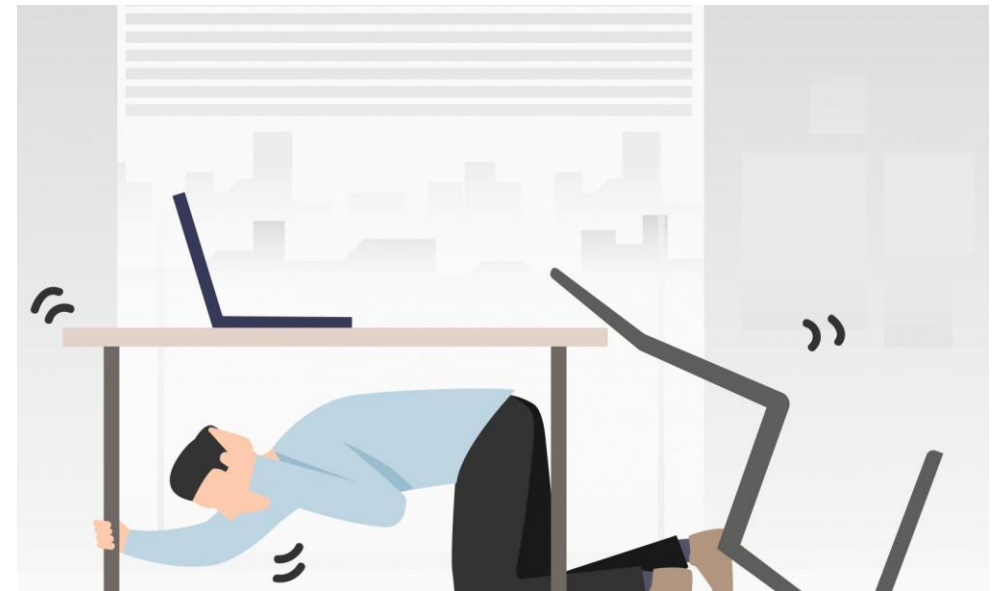
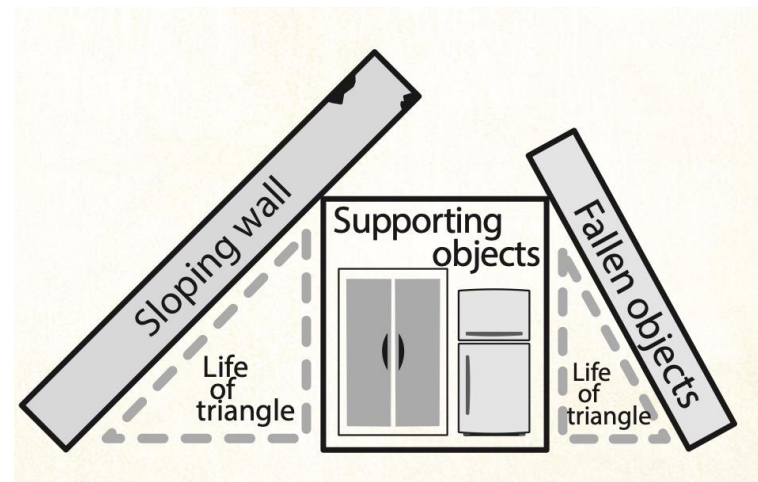
- To match the “National Disaster Prevention Day ” of the Executive Yuan, which simulates what happens during a large-scale earthquake.
- All anti-disaster systems should be activated, and students and teachers should cover themselves in a minute: **Drop, Cover, and Hold On.**

★To make sure students and teachers are able to build correct anti-earthquake concept and to save one another during an earthquake at the first minute.



Is it earthquake? What should I do?

- When earthquakes occur, we must take the appropriate immediate actions and pay attention with surrounding environment.
- Use your **arms** to **cover neck and head**, lower your body, and keep yourself staying at a safe position to evacuate.
- The primary safe emergency evacuation location is **the solid table**, if you can't find the solid table then **the building wall pillar** would be your second option.



Plan the closest and safest route

- After the earthquake, your route should stay away from wires and cables as far as possible.
- Be aware of falling objects above you.
- **Do not use elevators!!!**
- Do not forget to bring your “GO BAG”.



Earthquake Instructions

01 The Three-Word Mnemonic to Earthquake Safety

Drop
Cover
Hold on

Take cover under a sturdy table to protect you from falling objects and keep calm to stay safe.

03 If you are outside during earthquakes, seek nearby shelters and cover your head and neck immediately.

Move to an open area away from utility poles, vending machines, advertising signboards and avoid standing on or under the overpass to protect you from falling objects and debris.

02 Don't use elevators.

Call 119 right away for emergency assistance if you are in danger or stuck in the elevator.

If there is no table around you, drop down onto your hands and knees, and protect your head and neck with your arms to avoid injuries by falling objects.

Kaohsiung City Government



高雄醫學大學
國際事務處
Kaohsiung Medical University
Office of Global Affairs



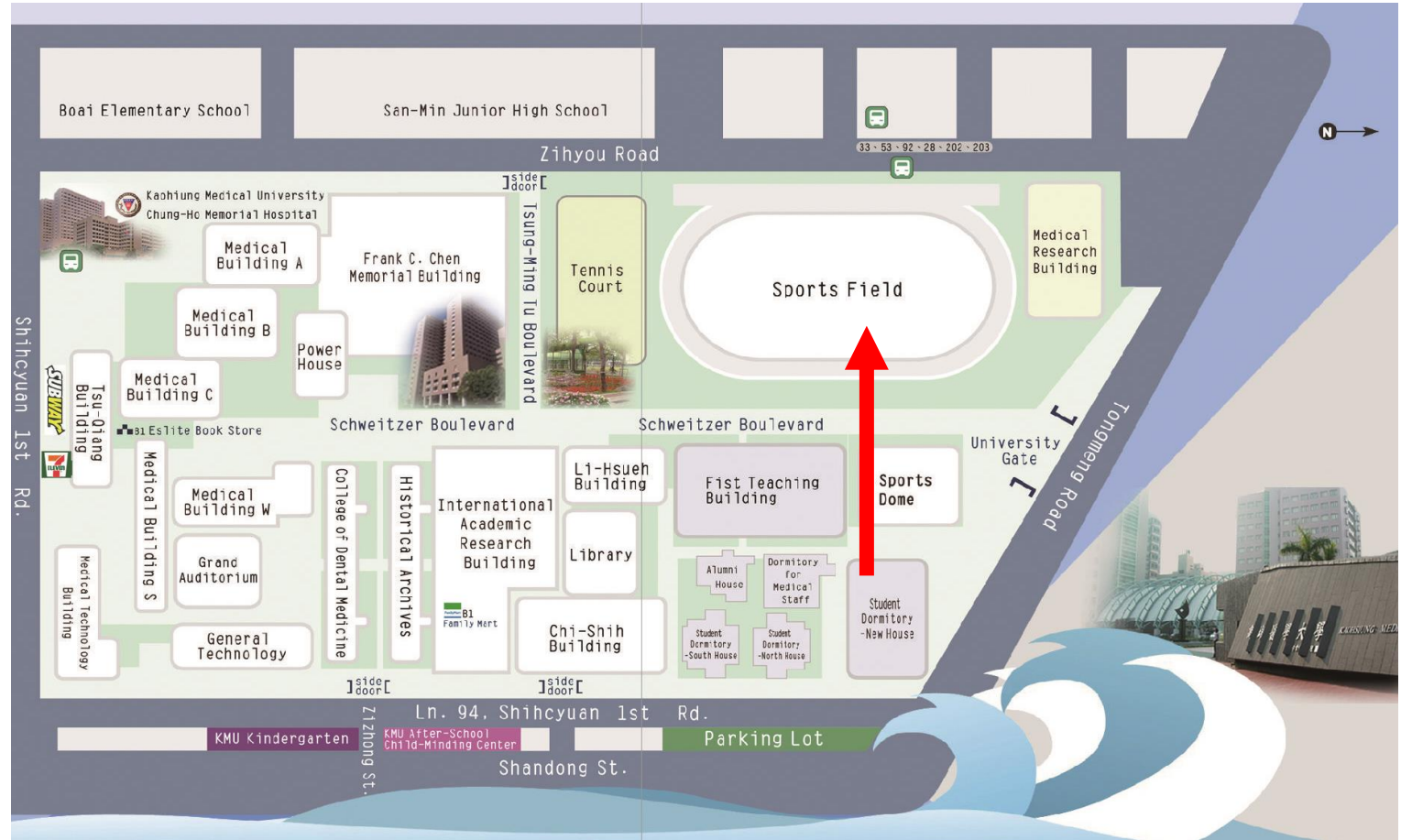
國家防災日
National Disaster Preparedness Day

- Do not panic when the earthquake is not severe, cover yourselves on site instead.
- Evacuate to the safe place.
- Protect your head and neck with protective headgears and/or light backpacks.



Emergency Contact

- Police Station: 110
- Fire Bureau: 119
- Campus Security Center: 07-3220809 (24H in Chinese)
- Office of Global Affairs (OGA): 07-3121101 Ext. 2383
- KMU Hospital Emergency Room: 07-3208249





X

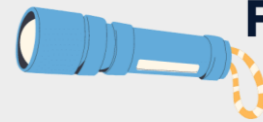


Self-protecting equipment

Water



nutrition bars
and snacks

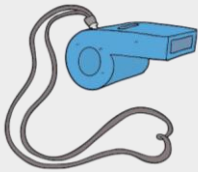


Flashlight



Mask

Whistle



Extra
batteries

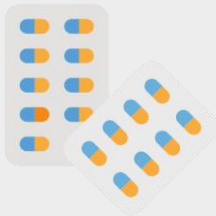


First aid
kit

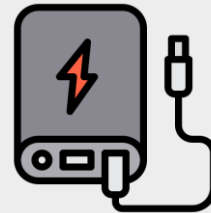


personal
Documents

Common
medications



Warm clothing



Power Bank



Cash